

**ECS Alternator
Relocation Kit
Instructions**
V1



**EAST COAST
SUPERCHARGING**

562 ROUTE 539
CREAM RIDGE, NJ
08514

PHONE:
609-752-0321
FAX: 609-752-
0320



Kit Contents:

- (1) 4 Rib Belt
- (2) Mounting Brackets
- (1) Replacement Pulley
 - (1) CM Pulley Nut
 - (1) Pulley Spacer
- (4) Bracket Mounting Bolts
- (2) Alternator Bolts W/Spacers
 - Misc. Washers



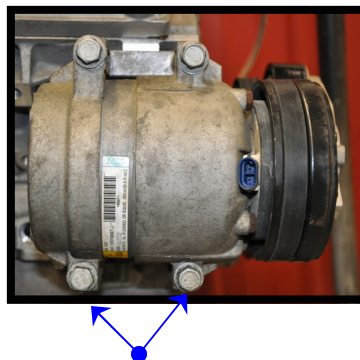
Installation Instructions:

CAUTION: Installation of this product should only be performed by those persons knowledgeable in the repair and modification of high performance automotive systems.

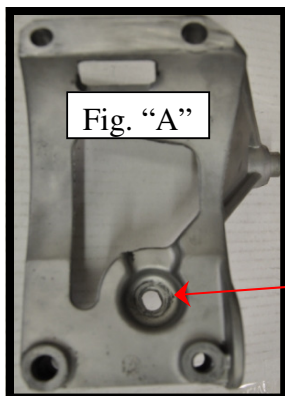
WARNING: The use of this Alternator Relocation kit requires the discharge and removal of the Air Conditioner compressor and associated lines. It is strongly recommended that this be done by a certified AC technician.

DISASSEMBLY

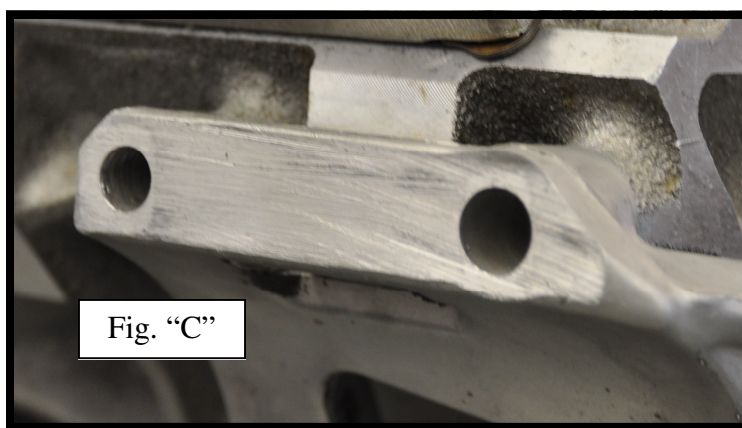
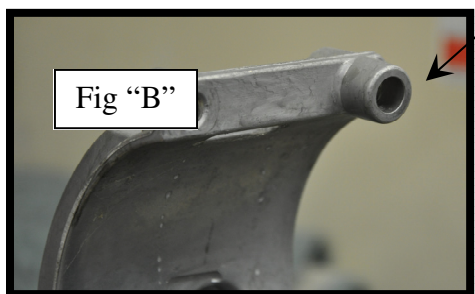
1. Unpack the ECS AR kit and check components against the contents list. If there are any parts missing contact ECS immediately.
2. Recover the refrigerant from the A/C system.
3. Disconnect the (-) and (+) battery cables remove the battery heat shield.
4. Remove the water pump.
5. Remove the compressor drive belt.
6. Disconnect the compressor clutch electrical connector.
7. Raise and support the vehicle.
8. Remove the compressor hose retaining bolt.
9. Disconnect the compressor hose from the compressor, cap or tape the hose end to prevent contamination.
10. Remove the lower compressor mounting bolts. (Blue arrows)
11. Lower the vehicle.
12. Remove the compressor mounting nut.
13. Fully loosen the compressor mounting stud. (Some years there are 2 bolts on top as shown)
14. Remove the upper compressor mounting bolt.



15. Remove the compressor and the mounting stud from the engine block.
16. Remove the compressor mounting stud from the compressor.
17. Remove the bolt that holds the compressor bracket to the engine block. (Red arrow Fig. A)



The compressor bracket needs to be modified before reinstallation. Using a hack saw carefully cut the stand off of the bracket as shown in Figure "B". After the stand has been removed, that area left behind needs to be made flat. Use a large flat file or a belt sander to smooth this area. It is very important to have this area flat as this is used as the mounting surface for the new brackets. An example of the modified bracket can be seen in Figure "C".



KIT INSTALLATION

NOTE: C5 USING STOCK BALANCER PLEASE READ

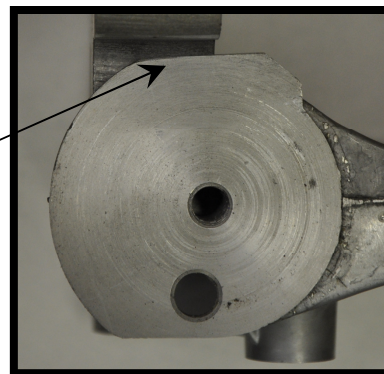
A modification to the compressor bracket is needed to allow additional movement in the adjustable idler.

- 1) Using a hack saw remove a section of material at the bottom side of the tensioner lock slot. This cut should remove no more than 3/16" of material. See Fig "D".

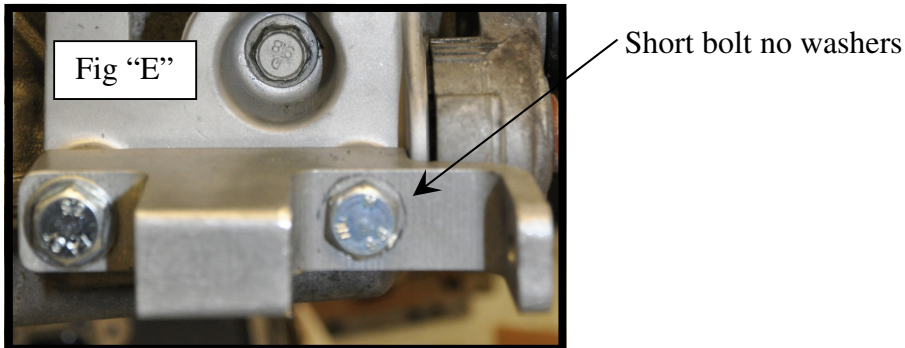


C6 MOD ONLY

C6 compressor bracket needs an area on the tensioner bracket flattened to give our mount room to sit properly.



- 1) Install the lower bracket onto the compressor bracket using one of the short 10mm bolts with no washer hand tight only.
- 2) Attach the assembly to the block using the factory bolt as seen in Fig "A" hand tight.
- 3) Install 1 long 10mm bolt with washers into the lower bracket, again only hand tight.
- 4) Install the upper bracket and 2 remaining short 10mm bolts into the upper holes for alignment purposes only. Hand tight.
- 5) Now tighten the 2 lower bracket bolts along with the center factory bolt. Reference Fig "E".



- 6) Using an air gun remove the factory pulley from the alternator along with the factory spacer.
- 7) Reinstall the new spacer and pulley with the factory nut. **NOTE: WE RECOMMEND USING RED LOC TITE ON THE NUT.**
- 8) Install the top bracket using the new bolts and washers hand tight.
- 9) Install the alternator into the lower bracket by placing the aluminum spacer on the back side of the alternator. Keep this loose to simplify the installation of the top bolt.
- 10) Swing the Alt up into position and install top bolt, again with the spacer at the back.
- 11) At this point you can tighten the 2 long alternator bolts then tighten the 2 short bracket bolts.
- 12) Install the new belt as you would normally for the compressor.



EAST COAST SUPERCHARGING

562 Pinehurst Rd. CR 539

Cream Ridge, NJ 08514

Installation questions? Call (609)-752-0321 ask for Rob