



[www.EastCoastSupercharging.com](http://www.EastCoastSupercharging.com)

Phone 609-752-0320 • Fax 609-752-0321

### **Directions for Installation of ECS Paxton Supercharger Kit**

- Disconnect battery
- Remove stock serpentine belt
- Remove stock belt tensioner, save the 2 bolts for later use on supercharger bracket
- Remove alternator
- Remove cap from coolant reservoir and drain anti-freeze
- Remove stock air bridge & filter assembly saving the MAF sensor for later
- Remove upper radiator mount
- Remove bottom air dam from radiator support, save the four 10mm bolts for later use
- Remove front radiator shroud by taking all the 7mm bolts out (Figure 1)



- Remove front tires
- Remove front sway bar
- Remove electric cooling fans



[www.EastCoastSupercharging.com](http://www.EastCoastSupercharging.com)

Phone 609-752-0320 • Fax 609-752-0321

- Remove left & right splash shields exposing air pump & horns (Figure 2)



- Remove air pump and horns
- If equipped, remove power steering cooler from engine cradle to gain access to rack & engine balancer
- Remove rack & pinion, make sure to loosen four 21mm cradle nuts & use a chisel to space the front of the cradle down so that the rack clears more easily (Figure 3)





[www.EastCoastSupercharging.com](http://www.EastCoastSupercharging.com)

Phone 609-752-0320 • Fax 609-752-0321

- Remove balancer bolt (do not reuse)
- Pin crank with supplied bit and collar
- Install pin & install new balancer bolt, torque is 235 ft. lbs. (Figure 4)



- Remove lower radiator hose
- Cut & install supplied extender (Figure 5 & 6)







[www.EastCoastSupercharging.com](http://www.EastCoastSupercharging.com)

Phone 609-752-0320 • Fax 609-752-0321



- Replace thermostat with supplied 160°
- Reinstall lower hose, leaving radiator end off
- Remove lower radiator support, the radiator & condenser will hang in car
- With both hands straighten out the condenser line allowing the bottom of the radiator & condenser to go forward, **USE CAUTION THE A/C SYSTEM IS UNDER PRESSURE** (Figure 7)



- Reattach lower radiator hose



[www.EastCoastSupercharging.com](http://www.EastCoastSupercharging.com)

Phone 609-752-0320 • Fax 609-752-0321

- Relocate air pump to left side of new ECS radiator support using supplied  $\frac{1}{4}$  - 20 riv-nuts and bolts (Figure 8)



- Reference picture below to locate placement for air pump on radiator support (Figure 9)





[www.EastCoastSupercharging.com](http://www.EastCoastSupercharging.com)

Phone 609-752-0320 • Fax 609-752-0321

- Install new radiator support (Figure 10)



- Install supplied TiAL BOV on to ECS intercooler
- From the top, install intercooler with TiAL BOV & tighten bolts (Figure 11)



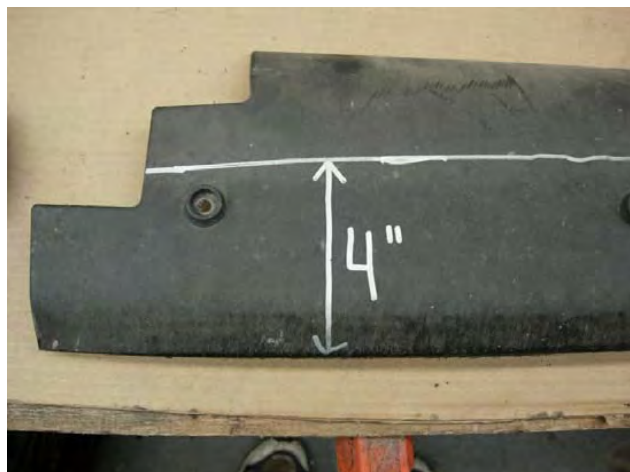




[www.EastCoastSupercharging.com](http://www.EastCoastSupercharging.com)

Phone 609-752-0320 • Fax 609-752-0321

- Modify lower air dam as shown & screw to radiator support with supplied screws (Figure 12 & 13)



- Notch air dam for intercooler mounts (Figure 14)





[www.EastCoastSupercharging.com](http://www.EastCoastSupercharging.com)

Phone 609-752-0320 • Fax 609-752-0321

- To relocate horns, remove this factory bolt above fog light (Figure 15)



- Relocate horns to this mounting hole above passenger side fog light (Figure 16)



- Extend horn wires with supplied black and green wires
- Note: Check right front headlight function to make sure horn does not interfere. Bend horn bracket if necessary.





[www.EastCoastSupercharging.com](http://www.EastCoastSupercharging.com)

Phone 609-752-0320 • Fax 609-752-0321

- Remove a/c belt, a/c idler & a/c tensioner
- Reinstall a/c belt before installing tensioner bracket, use tape to hold belt together to clear pulleys (Figure 17)



- Install tensioner bracket – making sure a/c belt tensioner moves freely (Figure 18)





[www.EastCoastSupercharging.com](http://www.EastCoastSupercharging.com)

Phone 609-752-0320 • Fax 609-752-0321

- Remove outer factory a/c tensioner dust shield and discard. Reuse the back one. (Figure 19)



- ECS subtensioner assembly with adjustable tensioner bracket (Figure 20)



- Install adjustable tensioner bracket assembly and remove tape from belts (Note: the tensioner bracket is made with a threaded adjuster so belt alignment can be fine-tuned per specific vehicle.) (Figure 21)





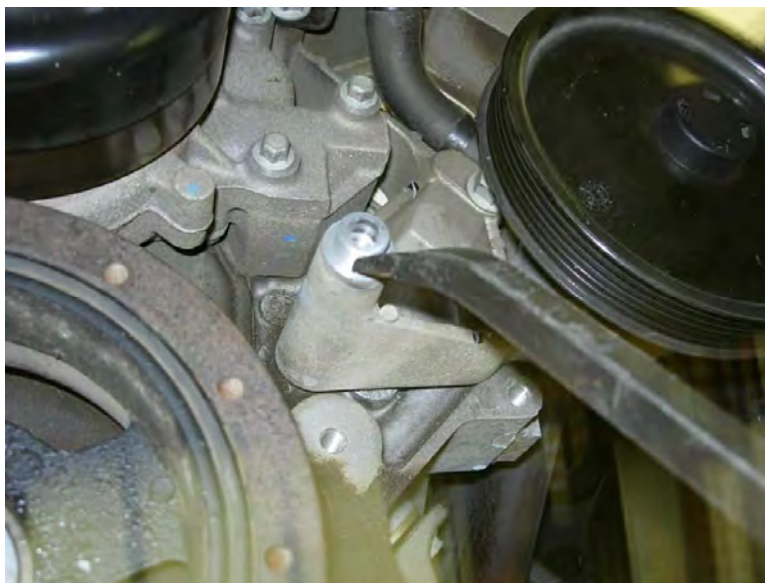
[www.EastCoastSupercharging.com](http://www.EastCoastSupercharging.com)

Phone 609-752-0320 • Fax 609-752-0321

- Remove p/s idler pulley & cut bracket as shown, remove bottom two water pump bolts (Figure 22)



- Cut p/s bracket where marked with a sawzall or air saw about 1/2 inch deep
- Take a pry bar or large screwdriver and rest against stock pulley mounting position (Figure 23)







[www.EastCoastSupercharging.com](http://www.EastCoastSupercharging.com)

Phone 609-752-0320 • Fax 609-752-0321

- Hit pry bar with a hammer and bracket will break as shown (Figure 24)



- Mount idler bracket with two stock water pump bolts & 17mm bolt provided (Figure 25, 26 & 27)





[www.EastCoastSupercharging.com](http://www.EastCoastSupercharging.com)

Phone 609-752-0320 • Fax 609-752-0321



- Mount idler pulley (Figure 28)



- Reinstall rack & pinion





[www.EastCoastSupercharging.com](http://www.EastCoastSupercharging.com)

Phone 609-752-0320 • Fax 609-752-0321

- Install ECS belt tensioner (Figure 29)



- Replace spark plugs with supplied TR6's, before alternator is reinstalled, gapped to .035 - .038
- Reinstall alternator
- Attach s/c bracket to engine using supplied bolts & 2.460 spacers & stock tensioner bolts, tighten all four bolts (Figure 30)







[www.EastCoastSupercharging.com](http://www.EastCoastSupercharging.com)

Phone 609-752-0320 • Fax 609-752-0321

- Next, install supercharger assembly and tighten all bolts (Figure 31)



- Install supercharger belt (Note: for extra help with belt alignment and installation reference our website for belt installation video)
- Adjust head unit idler until tensioner is almost fully open. Tighten nut for idler after adjusted (Figure 32)





[www.EastCoastSupercharging.com](http://www.EastCoastSupercharging.com)

Phone 609-752-0320 • Fax 609-752-0321

- Remove upper radiator hose from radiator & trim 1 inch off. Relocate clamp so that tangs are 180° from stock location (Figure 33)



- Install top black shield and let rest in place, making sure the front fits on the crease in the frame (Figure 34)

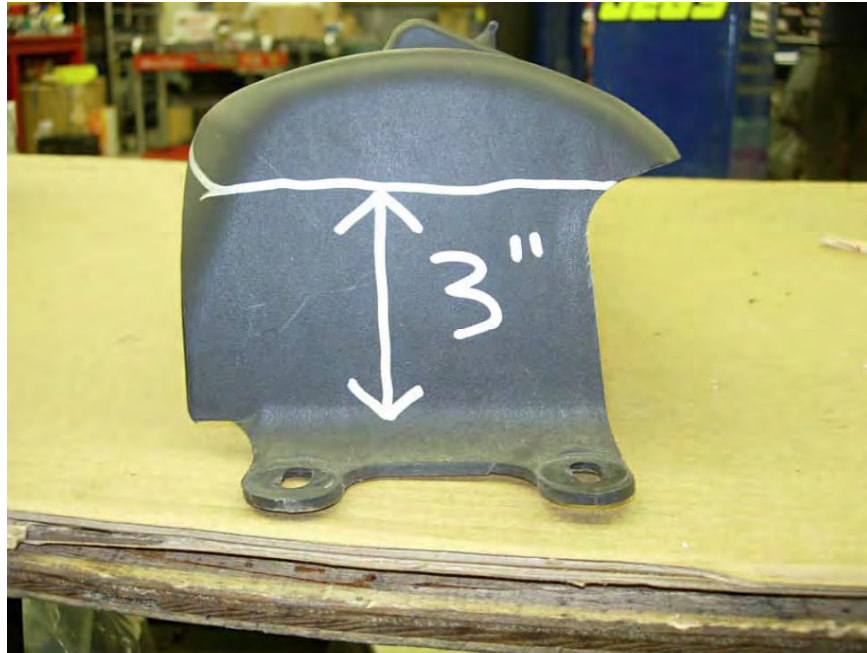




[www.EastCoastSupercharging.com](http://www.EastCoastSupercharging.com)

Phone 609-752-0320 • Fax 609-752-0321

- Reinstall all front air dams, some trimming needed to fit
- Cut upper radiator mount 3" from bottom flange (Figure 35)



- Lay mount on radiator & mark center of mounting holes in frame for location of "L" bracket (Figure 36)







[www.EastCoastSupercharging.com](http://www.EastCoastSupercharging.com)

Phone 609-752-0320 • Fax 609-752-0321

- Cut radiator mount between the “C” & “N” to clear charger inlet tube, cut 4 ¼ inches from bottom of mount (Figure 37)



- Cut bottom right corner of cutout to clear blower outlet (Figure 38)





[www.EastCoastSupercharging.com](http://www.EastCoastSupercharging.com)

Phone 609-752-0320 • Fax 609-752-0321

- Attach “L” brackets, reusing factory bolt and mounting hole (Figure 39)



- Reinstall electric cooling fans
- Install top radiator mount
- Notch front cradle for clearance of blower discharge (Figure 40)





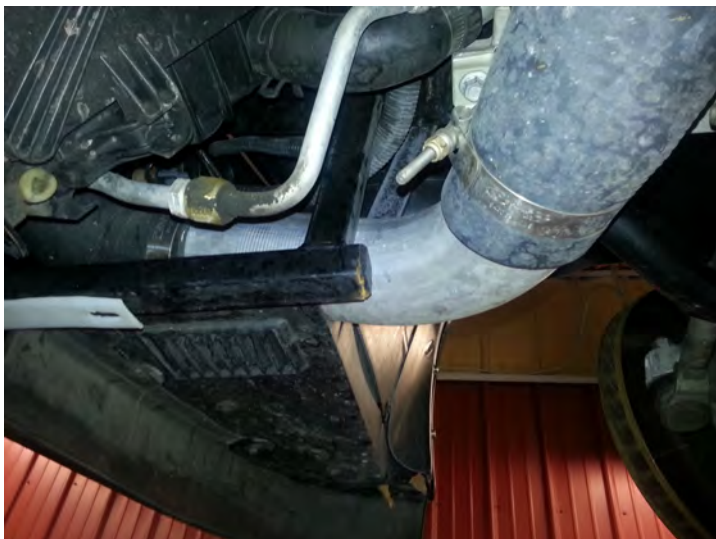
[www.EastCoastSupercharging.com](http://www.EastCoastSupercharging.com)

Phone 609-752-0320 • Fax 609-752-0321

- Install 90° elbow onto charger outlet with the long end towards the supercharger (Figure 41)



- Install metal “J” tube on the 90° elbow from the blower outlet. Aim towards the passenger side fog light (Figure 42 & 43)







[www.EastCoastSupercharging.com](http://www.EastCoastSupercharging.com)

Phone 609-752-0320 • Fax 609-752-0321

- Connect “J” tube to intercooler using the other 90° elbow. The short side of elbow towards “J” tube and long side connects to intercooler. (Figure 44)



- Reinstall front sway bar
- Reinstall front tires
- Install charge tube from intercooler to throttle body, MAF sensor goes between throttle body & charge tube (Figure 45 & 46)





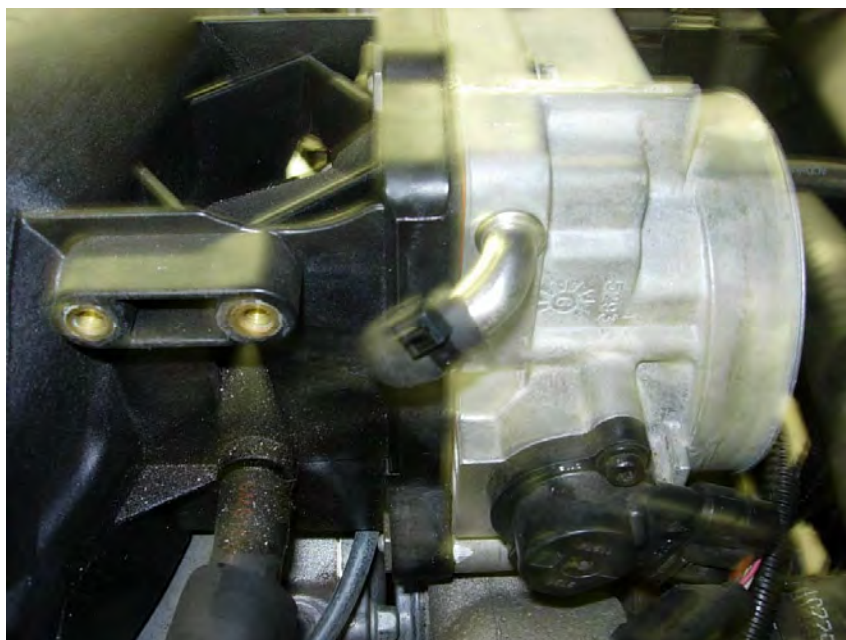
[www.EastCoastSupercharging.com](http://www.EastCoastSupercharging.com)

Phone 609-752-0320 • Fax 609-752-0321

- Cut vacuum booster hose & install vacuum tee (Figure 47)



- Route 7/32 vacuum line along left front frame rail, follow air pump line down & connect line to blow off valve
- Remove rubber hose from throttle body to valve cover, cap off elbow on throttle body with supplied 3/8 cap (Figure 48)



- Install 30" piece of 3/8 hose from air cleaner to passenger valve cover using supplied 3/8 barbed fitting



[www.EastCoastSupercharging.com](http://www.EastCoastSupercharging.com)

Phone 609-752-0320 • Fax 609-752-0321

- Replace fuel injectors with supplied injectors
- Install ECS fuel pump voltage booster. Reference supplied instructions for installation. (Figure 49)



- Refill all engine fluids and check for leaks
- Reconnect battery
- Cycle key & check fuel rails for leaks

**DO NOT START CAR WITH STOCK PROGRAM**

**Once proper tuning is installed, start car & watch belt for tracking issues.**

**Final custom tuning required.**

**Questions?**

**Reference our website's technical support section or call 609-752-0321 during shop hours Monday through Friday 8AM-5PM EST.**

**Thank you for choosing the ECS Paxton Supercharger Kit!**